



Du Cane Road, London, W12 0EB

Asking Price £350,000 Leasehold

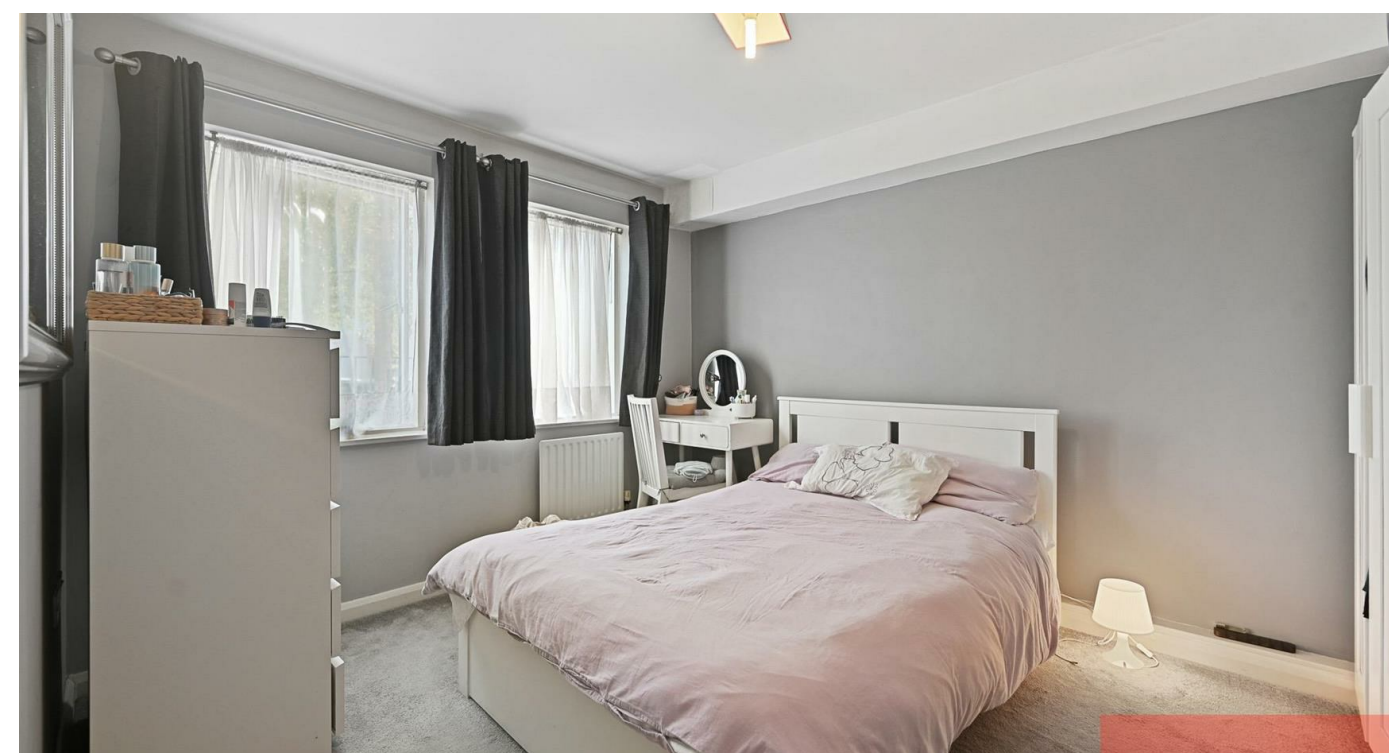
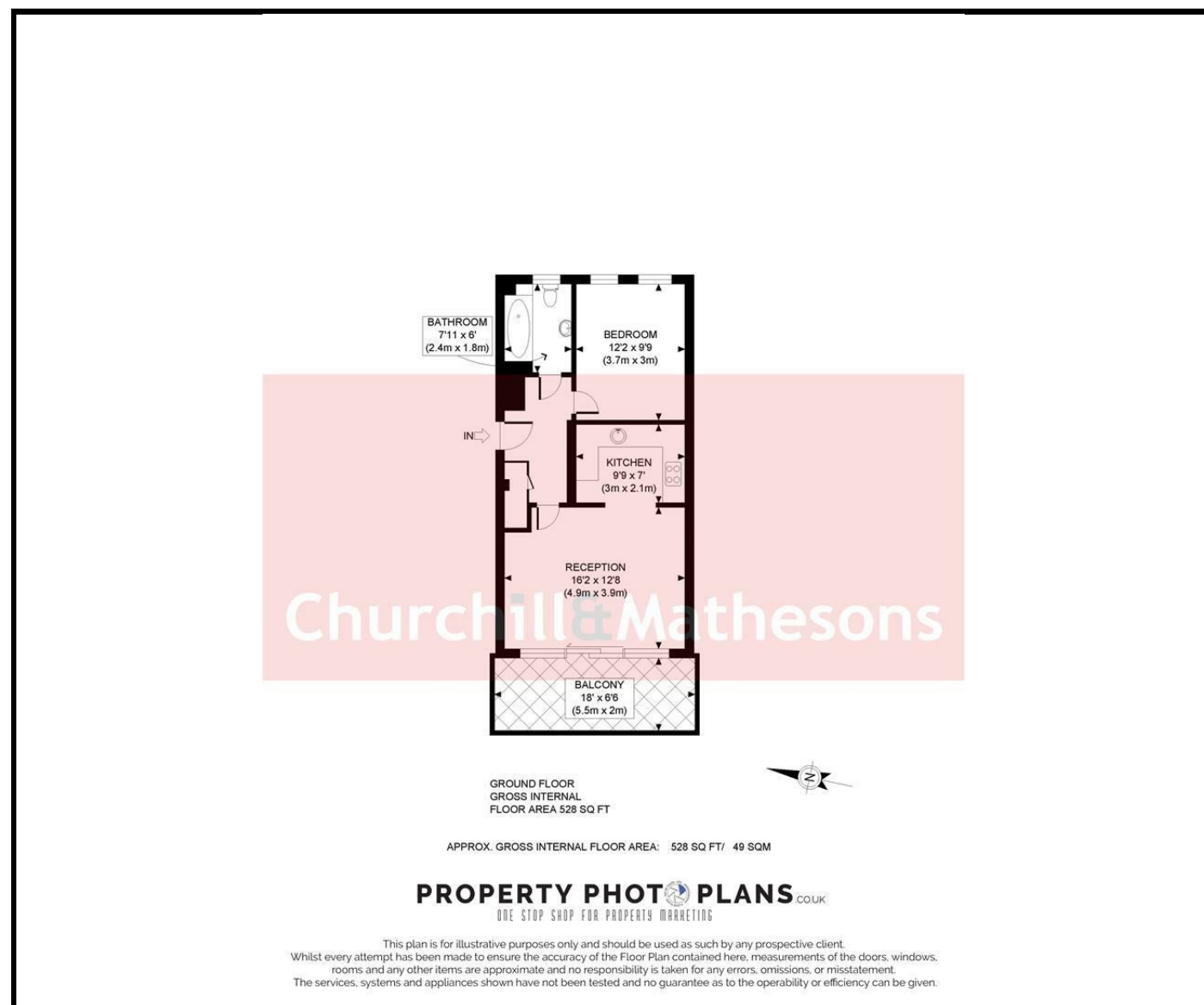


KEY FEATURES:

- GROUND FLOOR
- LONG LEASE
- 1 BEDROOM
- 1 BATHROOM
- 1 RECEPTION
- PRIVATE BALCONY
- PARKING BAY #23

Found on Du Cane Road, W3 in London, this well decorated 528sqft ground floor flat is perfectly located, close to open parks, shops and restaurants. Easy access into central London and Westfields Shopping Centre. The flat has 1 bedroom, 1 bathroom, a semi open plan kitchen and a small WEST facing private balcony plus 1 x PARKING. It has been thoughtfully designed to provide a peaceful retreat, in a modern setting.

This flat is perfect for individuals or couples seeking a cosy yet stylish living space in a vibrant part of London. With its appealing design and convenient location, this property is not to be missed. Whether you are looking for an investment or looking to stay, this charming property on Du Cane Road presents an excellent opportunity for comfortable lock up and go living.



Energy Efficiency Rating

	Current	Potential
Very energy efficient - lower running costs		
(92 plus) A		
(81-91) B		
(69-80) C	80	80
(55-68) D		
(39-54) E		
(21-38) F		
(1-20) G		
Not energy efficient - higher running costs		

England & Wales EU Directive 2002/91/EC

Environmental Impact (CO₂) Rating

	Current	Potential
Very environmentally friendly - lower CO ₂ emissions		
(92 plus) A		
(81-91) B		
(69-80) C		
(55-68) D		
(39-54) E		
(21-38) F		
(1-20) G		
Not environmentally friendly - higher CO ₂ emissions		

England & Wales EU Directive 2002/91/EC

Whilst every effort is made to give a fair description, the accuracy of these particulars is not guaranteed, neither do they constitute an offer or contract.

CHURCHILL & MATHESONS ESTATE AGENTS have not tested any apparatus, equipment, fitting or services and so cannot verify that they are in working order. The buyer is advised to obtain verification from their solicitor or surveyor. Measurements are correct to within +/- 6 A sonic tape is used. None of the statements contained in these particulars or any of our properties are to be relied upon as a representation of fact.